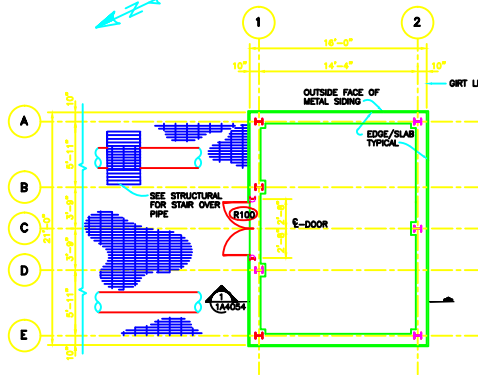
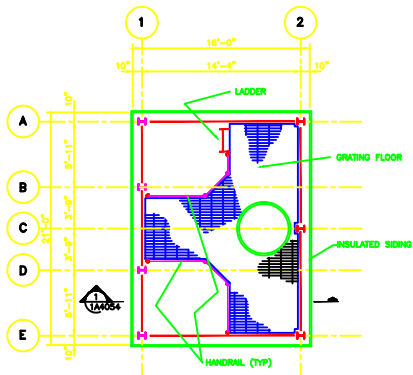


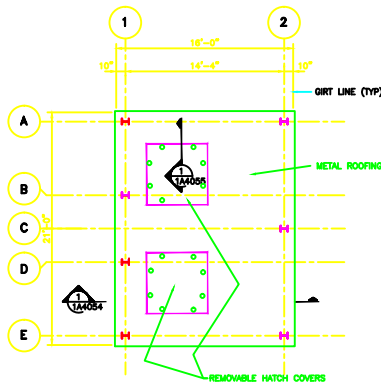
PS07V1



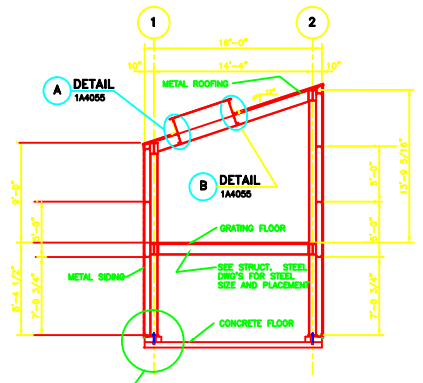
PLAN
1/4"=1'-0"



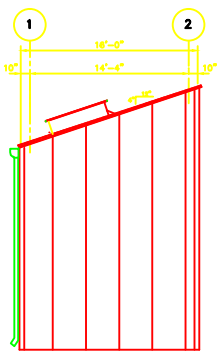
PLAN @ ELEV. 17'-0"
1/4"=1'-0"



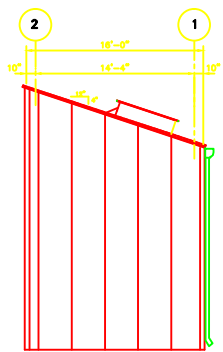
ROOF PLAN
1/4"=1'-0"



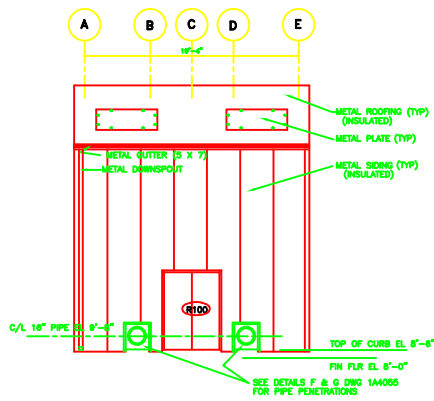
SECTION 1
1/4"=1'-0"



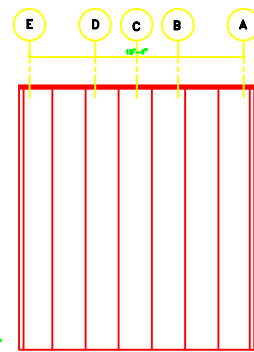
EAST ELEVATION
1/4"=1'-0"



WEST ELEVATION
1/4"=1'-0"



NORTH ELEVATION
1/4"=1'-0"



SOUTH ELEVATION
1/4"=1'-0"

NOTES

1. HEATING AND VENTILATION DESIGN TO BE DETERMINED BY CONTRACTOR. LOWER SIZES AND PLACEMENT TO BE DETERMINED BY HVAC DESIGN.
2. WALLS AND ROOF OF BUILDING SHALL BE INSULATED WITH 1 1/2" VINYL FACED FIBERGLASS INSULATION. INSULATION SHALL BE INSTALLED BETWEEN SIDING/ROOFING AND GRITS/PURLINS.
3. PROVIDE SCUPPER WITH BACKFLOW PREVENTER IN CONC CURBS OR PROVIDE FLOOR DRAIN WITH BACKFLOW PREVENTER AT ELEV. 8'-0" TO DRAIN FLOOR IN THE EVENT OF FLOODING.
4. PROVIDE PRE-FORMED CLOSURES FOR SIDING AT EDGES OF SIDING AND AT FLASHINGS.

REFERENCES

- 1C2120 RIVER INTAKE STRUCTURE SHEET 1
- 1C2121 RIVER INTAKE STRUCTURE SHEET 2
- 1C2122 RIVER INTAKE STRUCTURE RIP-RAP PLAN
- 1C3150 RIVER INTAKE STRUCTURE STEEL
- 1M2089 PIPING RIVER MAKE-UP WATER AT PUMP STRUCTURE



CAD
AUTOCAD BWT-1 14A054.DWG

Southern Company Services Inc.
for
SOUTHERN ELECTRIC INTERNATIONAL

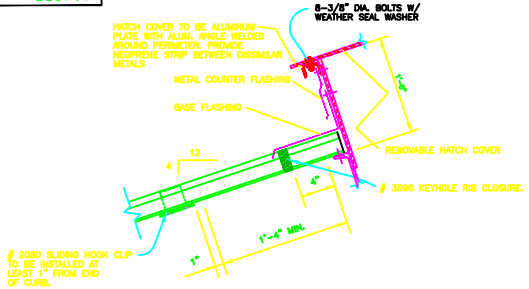
**BIRCHWOOD POWER FACILITY
ARCHITECTURAL
RIVER INTAKE BUILDING
PLANS AND ELEVATIONS**

ISSUED FOR CONSTRUCTION

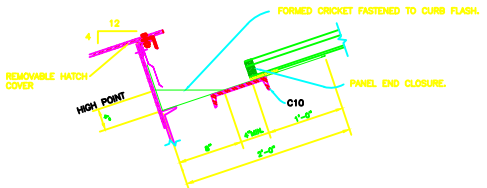
DATE: 8-7-84

PROJECT NO. 7273-03 1A4054 0

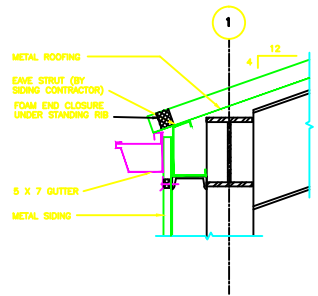
REVISION	DATE	REVISION	DATE	REVISION	DATE	REVISION	DATE	REVISION	DATE	REVISION	DATE	REVISION	DATE	REVISION	DATE	REVISION	DATE



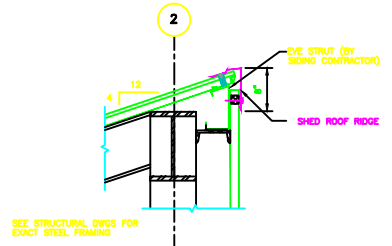
DETAIL A
NO SCALE



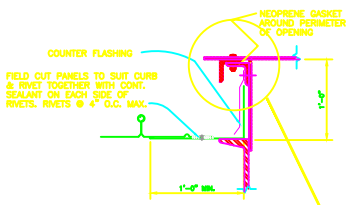
DETAIL B
NO SCALE



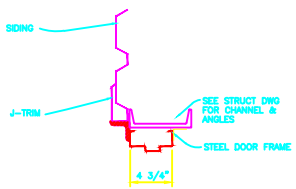
DETAIL C
NO SCALE



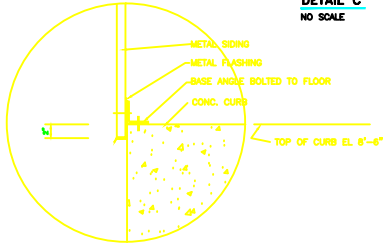
DETAIL D
NO SCALE



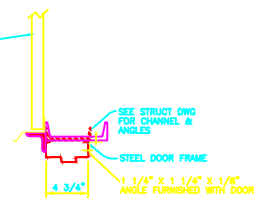
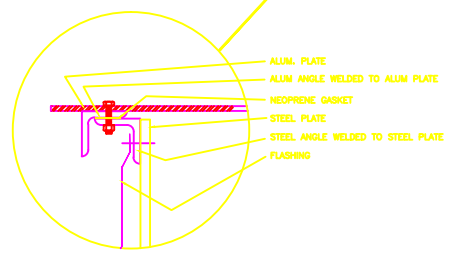
SECTION
NO SCALE



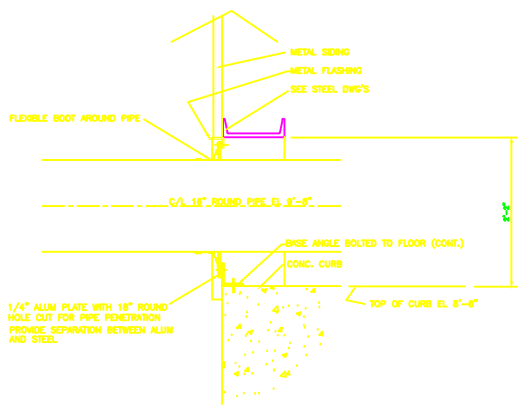
JAMB 12 SHOWN



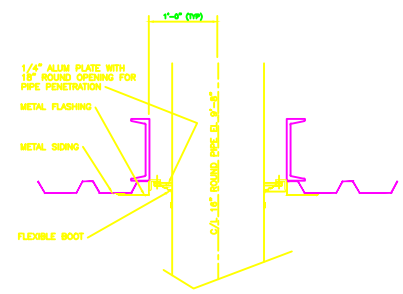
DETAIL E
NO SCALE



HEAD 12 SIMILAR



DETAIL F (HEAD AND SILL OF PIPE PENETRATIONS)
NO SCALE



DETAIL G (JAMBS OF PIPE PENETRATIONS)
NO SCALE



Autocad INT-# 1A4055.DWG

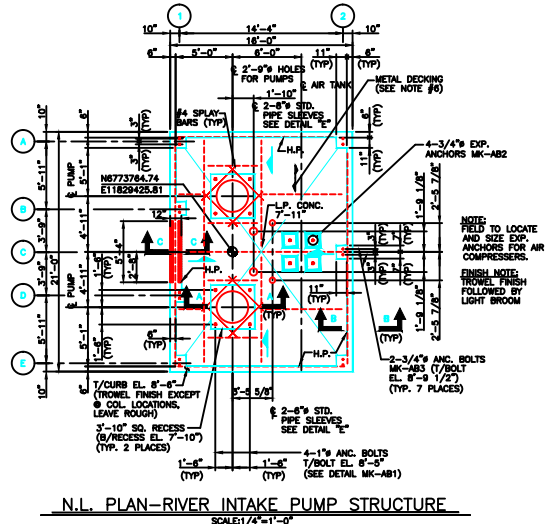
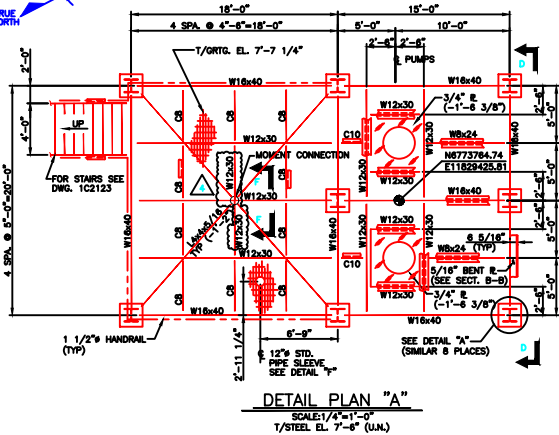
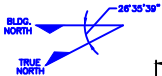
Southern Company Services Inc.
for
SOUTHERN ELECTRIC INTERNATIONAL

REVISION	DATE	REVISION	DATE	REVISION	DATE	REVISION	DATE	REVISION	DATE	REVISION	DATE	REVISION	DATE	REVISION	DATE

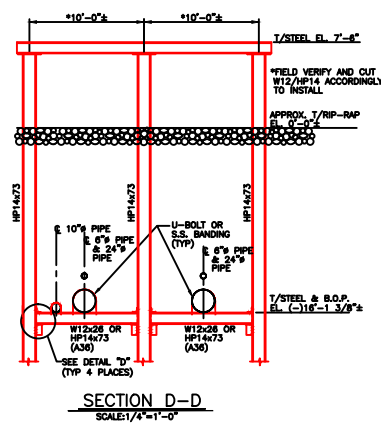
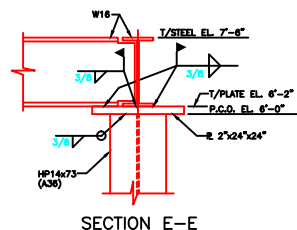
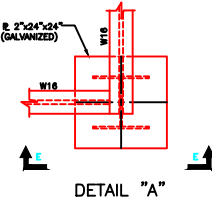
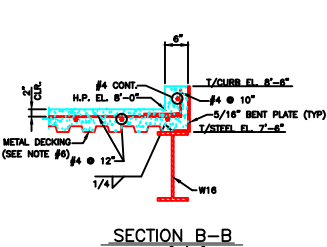
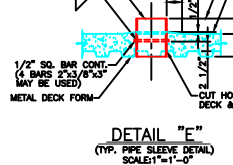
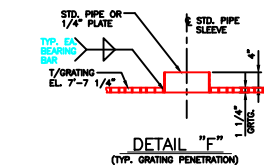
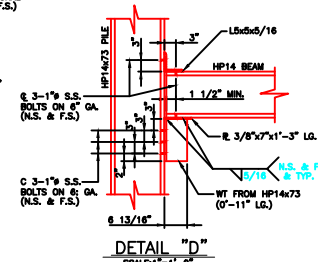
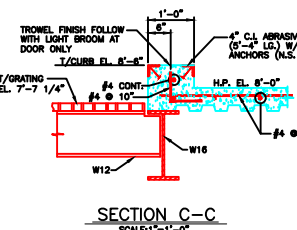
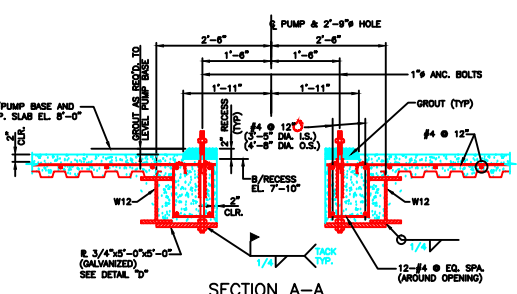
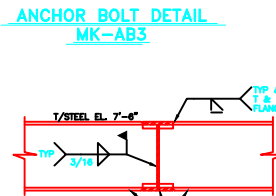
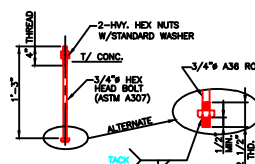
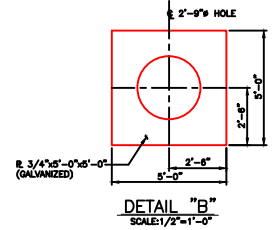
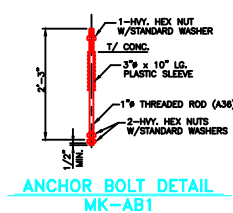
ISSUED FOR CONSTRUCTION

**BIRCHWOOD POWER FACILITY
ARCHITECTURAL
RIVER INTAKE BUILDING
SECTIONS & DETAILS**

SHOWN 7273-03 1A4055 0



BILL OF MATERIAL				
MARK	QTY.	DESCRIPTION	CAT. OR DWG. NO.	REMARKS
AB-1	8	1" x 2'-3" LG. A36 ROD W/2 HEAVY HEX NUTS (ASTM A336) & 3 STANDARD WASHERS (ASTM F436) & 3" x 10" LG. PLASTIC SLEEVE	SEE DETAIL ON THIS DWG.	GALVANIZE
AB-2	4	3/4" x 6'-0" LG. EXPANSION ANCHORS	W/1/2" DIA. BOLT & OR EQUAL	
AB-3	14	3/4" x 1'-3" LG. A36 ROD W/2 HEAVY HEX NUTS (ASTM A336) & STANDARD WASHER (ASTM F436)	SEE DETAIL ON THIS DWG.	GALVANIZE
	2	4"x3'-4" LG. CAST IRON ABRASIVE NOSE W/INTERNAL CONC. ANCHORS (AAB)	SEE SECTION C-C	
	2	8" x 0'-10" LG. STD. PIPE SLEEVE	SEE DETAIL "E"	GALVANIZE
	2	8" x 0'-10" LG. STD. PIPE SLEEVE	SEE DETAIL "E"	GALVANIZE
	1	12" x 0'-5 1/4" LG. STD. PIPE SLEEVE	SEE DETAIL "F"	GALVANIZE



- NOTES:**
- ALL CONCRETE SHALL HAVE A MINIMUM COMPRESSIVE STRENGTH OF 4000 PSI AT 28 DAYS.
 - ALL REINF. STEEL IS TO CONFORM TO MATERIAL SPECIFICATION ASTM A-615 GRADE 60.
 - REINFORCING STEEL IS TO BE DETAIL AND PLACED IN ACCORDANCE WITH ACI 318-89 AND THE CRS "MANUAL OF STANDARD PRACTICE FOR DETAILING REINF. STEEL".
 - UNLESS OTHERWISE NOTED, REINF. STEEL IS TO HAVE A MINIMUM CONCRETE COVER WHERE FORMS ARE USED AND 3" MINIMUM COVER WHEN POURED AGAINST THE EARTH.
 - ALL EXPOSED CONCRETE CORNERS SHALL RECEIVE 3/4" CHAMFER.
 - METAL DECKING TO BE W/ALCRAFT 1.5C18, 1 1/2" DEPTH, 6" PITCH AND 18 GA. OR EQUAL, (GALVANIZED) METAL DECKING TO BE FASTENED TO STEEL WITH POWDER ACTUATED FASTENERS EQUAL TO HILTI DX-450 SYSTEM INSTALLED PER MANUFACTURERS RECOMMENDATION FOR DECKING.
 - WORK THIS DWG. WITH DWG. 1C2120 & 1C2122.
- STEEL NOTES:**
- GRATING SHALL BE GALVANIZED STEEL (A36) HAVING 1 1/4"x3/16" BEARING BARS WITH CROSS BARS @ 4" C/C EQUAL TO TYPE W/8 FIG B OR BORDEN OR EQUAL. GRATING SHALL BE SERRATED OR HAVE A NON-SLIP ALUMINUM OXIDE GRANULES BONDED TO THE WALKING SURFACE EQUAL TO HEBAC BY BORDEN.
 - FOR GENERAL NOTES CONCERNING STRUCTURAL STEEL, GRATING AND HANDRAIL, SEE DWG. 1C3000 UNLESS NOTED OTHERWISE ON THIS DRAWING.
 - HOT-DIPPED GALVANIZED SURFACES DAMAGED BY WELDING, CUTTING, BURNING OR OTHER DAMAGE INCURRED BY TRANSPORT OR ERECTION SHALL BE REPAIRED WITH Z.R.C. COLD GALVANIZING COMPOUND (BY J.L.C. PRODUCTS) GALVANIZED (BY METALLOY PRODUCTS) OR EQUAL REPAIR TO BE MADE IN ACCORDANCE WITH THE MANUFACTURERS RECOMMENDATIONS OR AS NOTED IN NOTE 9 OF "GENERAL NOTES-GRATING" ON DWG. 1C3000.

REFERENCES:

- 1A00A ARCHITECTURAL-WATER INTAKE STRUCTURE
- 1C2120 CIVIL-MAKE-UP WATER RIVER INTAKE STRUCTURES-SHEET 1
- 1C2122 CIVIL-MAKE-UP WATER RIVER INTAKE STRUCTURES HP R/W LOCATION & ELEVATION
- 1M2069 PIPING-MAKE-UP WATER RIVER INTAKE



THE PROJECT OWNER'S NAME AND ADDRESS: SOUTHERN COMPANY SERVICES, INC. THE PROJECT'S NAME AND ADDRESS: SOUTHERN ELECTRIC INTERNATIONAL, INC. PROJECT NO.: 07-18-84 SHEET NO.: 7272-43 DATE: 12/21/01	SOUTHERN COMPANY SERVICES, INC. SOUTHERN ELECTRIC INTERNATIONAL, INC. BRIDGWOOD POWER FACILITY MAKE-UP WATER RIVER INTAKE STRUCTURES SHEET 2
---	---

NO.	DATE	BY	CHKD.	APPV.	DESCRIPTION
1	07-18-84	DWP	WJH	WBF	REVISED N.L. PLAN
2	08-08-84	DWP	WJH	WBF	REVISED DETAIL PLAN "A"
3	10-18-84	DWP	WJH	WBF	REVISED DETAIL PLAN "A"
4	11-08-84	DWP	WJH	WBF	REVISED DETAIL PLAN "A"
5	11-08-84	DWP	WJH	WBF	REVISED DETAIL PLAN "A"
6	11-08-84	DWP	WJH	WBF	REVISED DETAIL PLAN "A"
7	11-08-84	DWP	WJH	WBF	REVISED DETAIL PLAN "A"
8	11-08-84	DWP	WJH	WBF	REVISED DETAIL PLAN "A"
9	11-08-84	DWP	WJH	WBF	REVISED DETAIL PLAN "A"
10	11-08-84	DWP	WJH	WBF	REVISED DETAIL PLAN "A"
11	11-08-84	DWP	WJH	WBF	REVISED DETAIL PLAN "A"
12	11-08-84	DWP	WJH	WBF	REVISED DETAIL PLAN "A"
13	11-08-84	DWP	WJH	WBF	REVISED DETAIL PLAN "A"
14	11-08-84	DWP	WJH	WBF	REVISED DETAIL PLAN "A"
15	11-08-84	DWP	WJH	WBF	REVISED DETAIL PLAN "A"
16	11-08-84	DWP	WJH	WBF	REVISED DETAIL PLAN "A"
17	11-08-84	DWP	WJH	WBF	REVISED DETAIL PLAN "A"
18	11-08-84	DWP	WJH	WBF	REVISED DETAIL PLAN "A"
19	11-08-84	DWP	WJH	WBF	REVISED DETAIL PLAN "A"
20	11-08-84	DWP	WJH	WBF	REVISED DETAIL PLAN "A"
21	11-08-84	DWP	WJH	WBF	REVISED DETAIL PLAN "A"
22	11-08-84	DWP	WJH	WBF	REVISED DETAIL PLAN "A"
23	11-08-84	DWP	WJH	WBF	REVISED DETAIL PLAN "A"
24	11-08-84	DWP	WJH	WBF	REVISED DETAIL PLAN "A"
25	11-08-84	DWP	WJH	WBF	REVISED DETAIL PLAN "A"
26	11-08-84	DWP	WJH	WBF	REVISED DETAIL PLAN "A"
27	11-08-84	DWP	WJH	WBF	REVISED DETAIL PLAN "A"
28	11-08-84	DWP	WJH	WBF	REVISED DETAIL PLAN "A"
29	11-08-84	DWP	WJH	WBF	REVISED DETAIL PLAN "A"
30	11-08-84	DWP	WJH	WBF	REVISED DETAIL PLAN "A"
31	11-08-84	DWP	WJH	WBF	REVISED DETAIL PLAN "A"
32	11-08-84	DWP	WJH	WBF	REVISED DETAIL PLAN "A"
33	11-08-84	DWP	WJH	WBF	REVISED DETAIL PLAN "A"
34	11-08-84	DWP	WJH	WBF	REVISED DETAIL PLAN "A"
35	11-08-84	DWP	WJH	WBF	REVISED DETAIL PLAN "A"
36	11-08-84	DWP	WJH	WBF	REVISED DETAIL PLAN "A"
37	11-08-84	DWP	WJH	WBF	REVISED DETAIL PLAN "A"
38	11-08-84	DWP	WJH	WBF	REVISED DETAIL PLAN "A"
39	11-08-84	DWP	WJH	WBF	REVISED DETAIL PLAN "A"
40	11-08-84	DWP	WJH	WBF	REVISED DETAIL PLAN "A"
41	11-08-84	DWP	WJH	WBF	REVISED DETAIL PLAN "A"
42	11-08-84	DWP	WJH	WBF	REVISED DETAIL PLAN "A"
43	11-08-84	DWP	WJH	WBF	REVISED DETAIL PLAN "A"
44	11-08-84	DWP	WJH	WBF	REVISED DETAIL PLAN "A"
45	11-08-84	DWP	WJH	WBF	REVISED DETAIL PLAN "A"
46	11-08-84	DWP	WJH	WBF	REVISED DETAIL PLAN "A"
47	11-08-84	DWP	WJH	WBF	REVISED DETAIL PLAN "A"
48	11-08-84	DWP	WJH	WBF	REVISED DETAIL PLAN "A"
49	11-08-84	DWP	WJH	WBF	REVISED DETAIL PLAN "A"
50	11-08-84	DWP	WJH	WBF	REVISED DETAIL PLAN "A"

