



ANNUAL REPORT

For calendar year 2023

Department Mission & Vision Statement

Mission Statement

We will answer the call of those in need remaining vigilant and committed to the preservation of life, the protection of property, and the conservation of the environment.

Vision Statement

We will strive to be a high performance combination department and continue to meet the current and future needs of our customers through cooperative teamwork and innovative technology. Through strength, determination and commitment we will ensure this department exceeds the expectations of those we serve.

Core Values

- **P**rofessionalism - I will do my job to the best of my ability and continuously strive to improve.
- **R**espect - I will treat others with dignity, honor and compassion, as I would want to be treated myself.
- **I**ntegrity - I will be honest and do what is right regardless of the circumstances.
- **D**edication - I will remain committed to exceeding the expectations of those who depend on me.
- **E**xcellence - I will not accept mediocrity in the performance of my duties.



Department at a Glance

- 3 Stations
- 62 Uniformed Career Personnel, 25 Volunteer Personnel
- 4,275 Incidents in 2023
- Services Provided
 - Fire Suppression, Vehicle Rescue, Technical Rescue, Water Response, BLS/ALS EMS First Response & Transport, Fire Prevention, Fire Investigation, Fire Code Enforcement, Fire/EMS Training, Public Education, Child Car Seat Safety Checks, Emergency Management

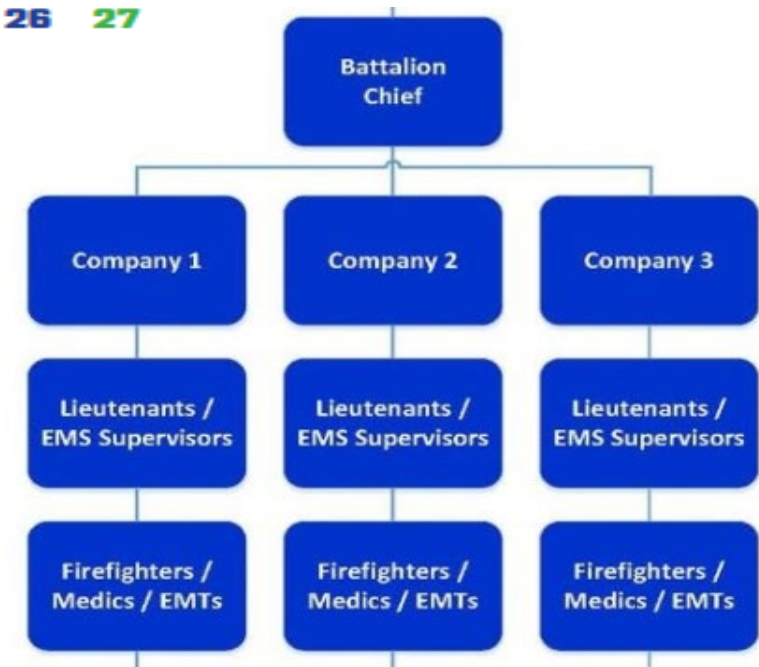


Career Staff

- 3 24 hour Shifts (A,B,C) 7AM-7AM
- 19 Funded Positions per Shift
- Staff 3 Stations
- Dedicated Engine & Ambulance Staffing @ Company 1 & Company 2
- Cross Staffing @ Company 3

APRIL 2024

S	M	T	W	T	F	S
	1	2	3	4	5	6
7	8	9	10	11	12	13
14	15	16	17	18	19	20
21	22	23	24	25	26	27
28	29	30				



Stations

Co 2- Dahlgren



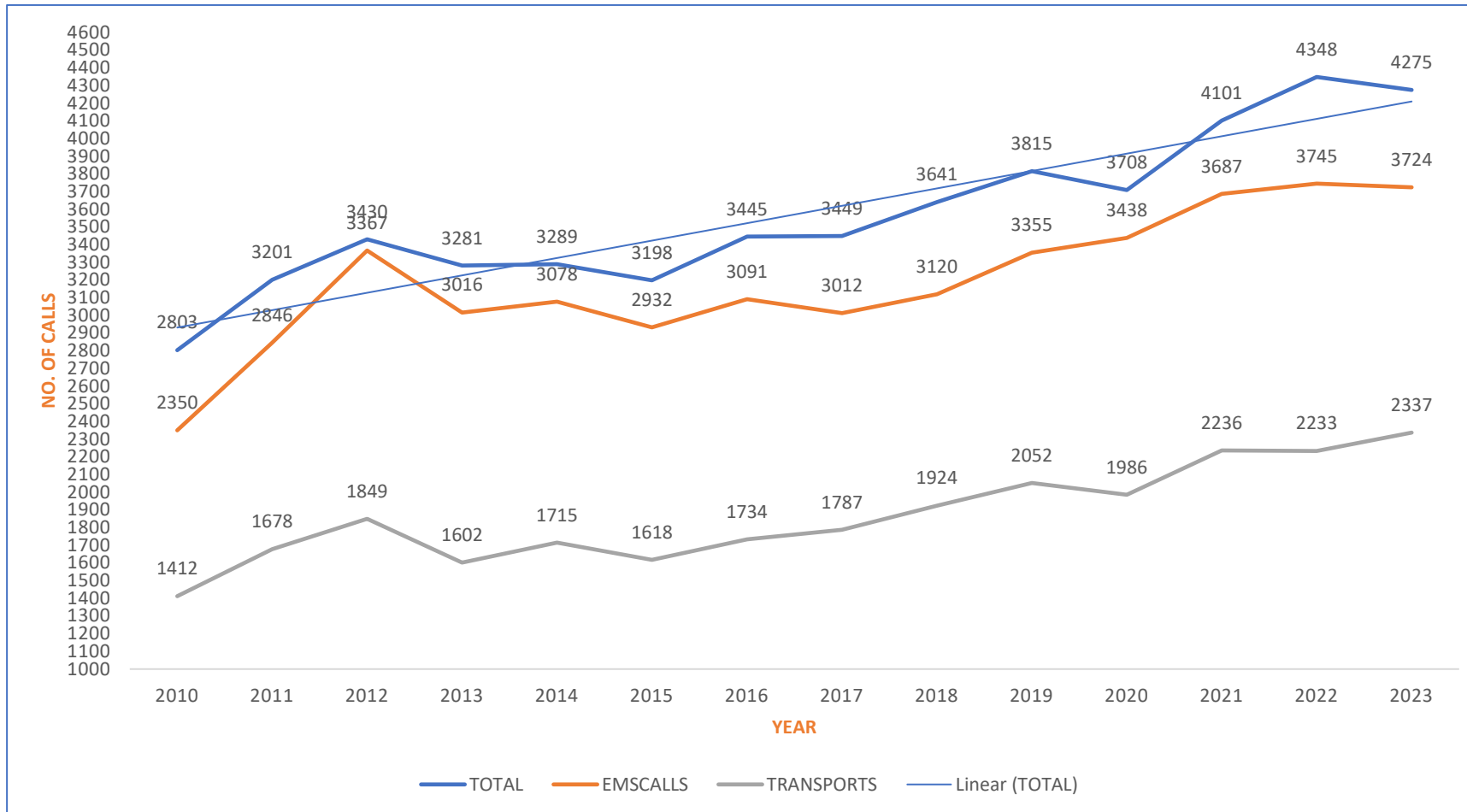
Co 1-Courthouse



Co 3- Fairview Beach



Annual Call Volume, EMS Calls & Transports



EMS Transport Revenue Recovery

- CY23 Revenue Recovery \$1,030,033
- In August 2023 BoS approved amendment to Ambulance Fee for Service Ordinance- increase rates to 40% above Medicare effective January 1, 2024
- Increase BLS, ALS 1 & ALS 2 charges to 140% (rounded) above Medicare rates
 - BLS - \$590
 - ALS 1 - \$700
 - ALS 2 - \$1,015
- Increase loaded mileage rate from \$12.00 to \$13.00 due to increased prices for fuel, apparatus and maintenance.
- Add consumable supply charges of \$125 for BLS and \$175 for ALS
- Add oxygen supply fees of \$50
- **Estimated additional \$475,000 per year**



Career Staff Recruitment & Retention

In 2023

Career Staff

- 5 personnel Hired
- 7 Personnel Separated

King George Department of Fire, Rescue & Emergency Services

Protect Your Community!

[Link to Application](#)



Applications are open for Firefighter/EMT!
Applications close March 2023. Testing April 2023.
Start date May 2023!

Non-Competitive Promotional
Process to Technician Rank!

Starting Salary \$50,048.93

"Our Family Protecting Yours"

Volunteer Recruitment & Retention

- **Since 11/2/2017** (when the volunteer applicant on-boarding process was re-vamped) – **3/1/2024** the Membership Committee has conducted:
90 Volunteer applicant interviews

26 Volunteer Orientations with **69** Volunteer applicants in attendance This means that **69** volunteer applicants completed the pre-requisites in the on-boarding process and were voted into membership.

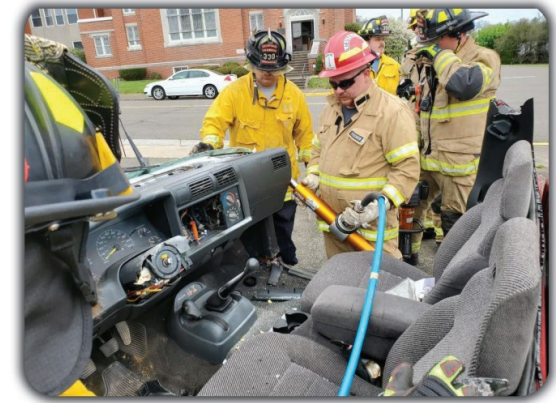
105 volunteer members were listed as active on the rosters in **2017**.

Since 2017 to 3/1/2024, 40 of those have been dismissed due to not meeting minimum status requirements, 1 was deceased, **6 were life members** who transitioned to an Inactive status, and **37 resigned**.

2023 ended with 17 Operational Members and 5 Auxiliary members

Service to Others: A Report on the Commonwealth's Fire and EMS Service

A report to the Virginia General Assembly on Virginia's fire and EMS funding and needs as required by House Bill 2175 (2023).



*The survey found that **91%** of respondents reported a **decrease in volunteer fire and EMS providers** over the past three years*

Career Staff Certification Pay

	EMT-Intermediate	EMT-Paramedic	ALS Preceptor	College Degree
King George	\$4,000 (\$3,000 AEMT)	\$5,000	\$1,250	
Spotsylvania	\$10,400	\$14,600	\$2,000	\$500/\$1,000/\$1,500
Stafford	\$2,500 (sign-on)+\$2,500	\$2,500 (sign-on) +\$7,500		



2023 Call Stats

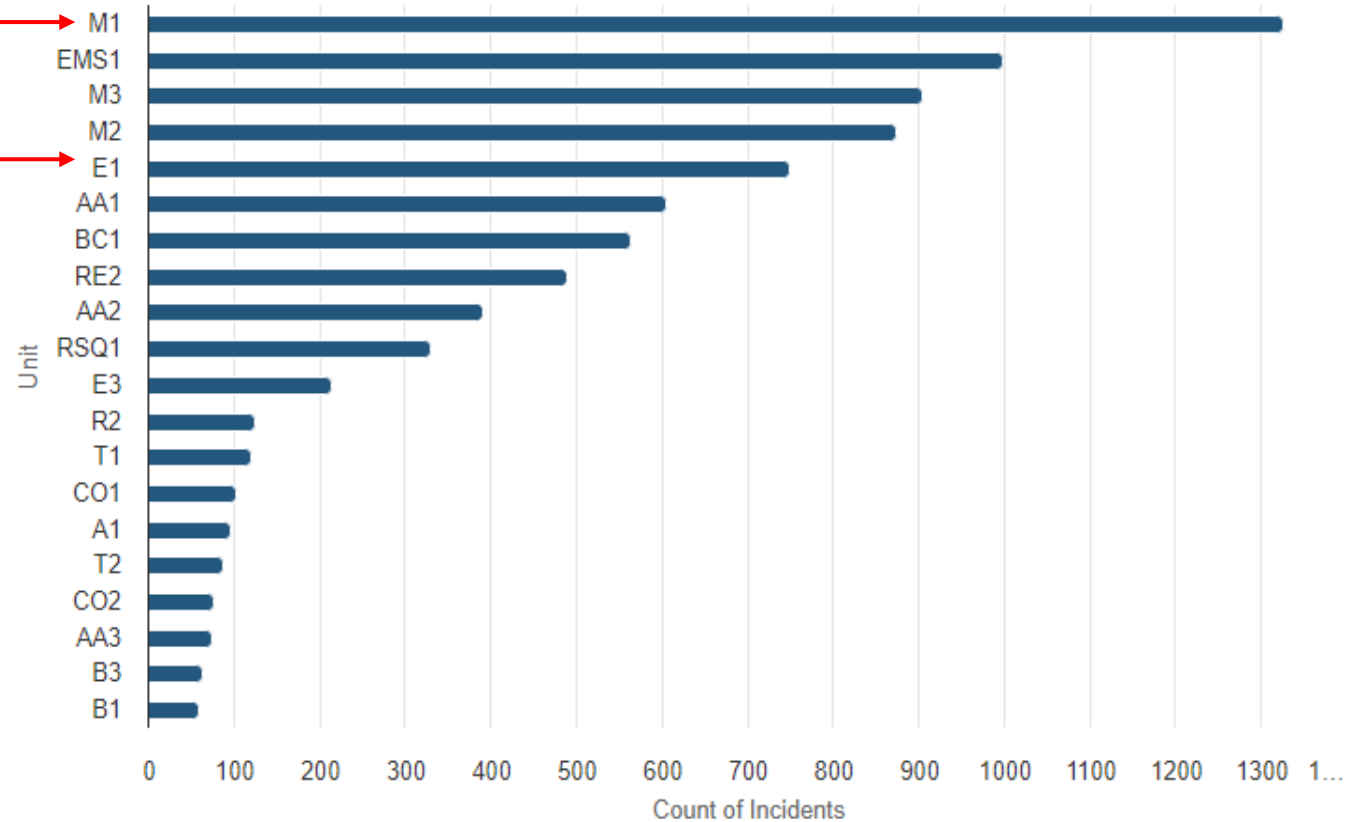
- 4,275 Total
 - First Call 01/01/23 12:43AM
 - Last Call 12/31/23 7:10PM
 - 3,745 EMS Calls
 - 2,337 Transports –
 - 2,133 Mary Washington (Fredericksburg)
 - 171 SRMC (Spotsylvania)
 - 36 UMRMC (LaPlata)
 - Average EMS Transport Call Length= ~2hrs
 - Ambulance Fee for Service: \$942,251.44 (2022 \$825,194.51)
 - Fire Incidents
 - Dollars Lost (Property & Contents) = \$1,204,830
 - Dollars Saved (Property & Contents) = \$3,899,150



2023 Unit Stats

Incidents by EMS Unit (Top 20)

Jan 01, 2023 12:00 AM to Dec 31, 2023 11:59 PM



Medic 1 Responded to 1,326 calls
Engine 1 Responded to 750 calls



Personnel Staffing

	<u>Company 1</u>	<u>Company 2</u>	<u>Company 3</u>
Current	08	06	04
Recommended	11	07	06
Per Shift Difference	03	01	02
Total Difference	09	03	06

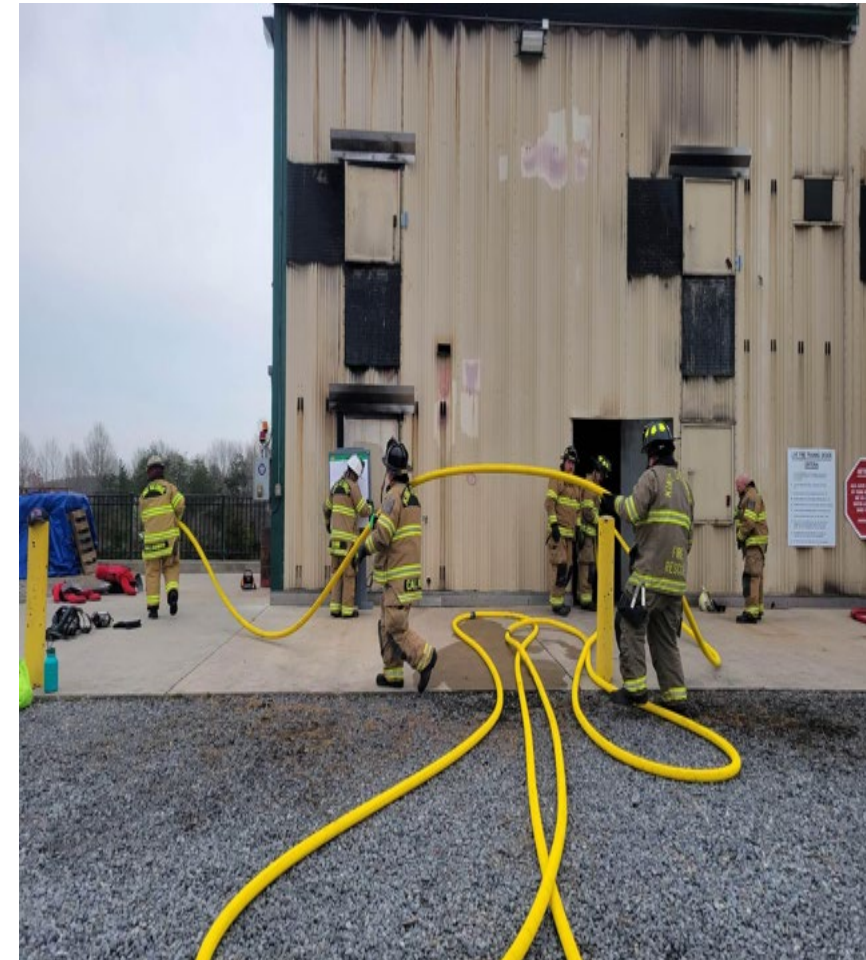
Current Staffing per Shift: 18 Positions

Current Recommended Staffing Levels per Shift: 24 Positions

Net Department Staffing Difference: 18 Positions

FY24 Funded Daily Staffing Level: 19 (*mid-year funded)

** Personnel staffing recommendations per VDFP: 2011 Findings and Recommendations based on NFPA 1720 Standards. Reference: KG FRES 2012-2016 Strategic Plan.*



Fire Call Types 2023

- Fire Calls: (As Dispatched)
 - 37 Brush / Woods Fires
 - 27 Residential Type Fires
 - 1 Apartment Type Fire
 - 43 Commercial AFA
 - 110 Residential AFA
 - 12 Gas Leaks
 - 17 Hazmat/Fuel Spills
 - 21 Carbon Monoxide
 - 12 Vehicle Fires
 - 8 Water Rescues/Fires
 - 22 Trees on Building / Line
 - 28 Smoke Investigations
 - 9 Illegal Burning
 - 12 MVA with Entrapment
- 144 Public Service/Standby's
- 4 Fire Investigations
- 7 Fires endangering a structure
- 23 Emergency Lockouts
- 2 Power Lines Down
- 6 Unusual/Unknown Odor
- 16 Smoke In Bldg/Residence
- 4 Transformer Fires
- 3 Machinery Fires

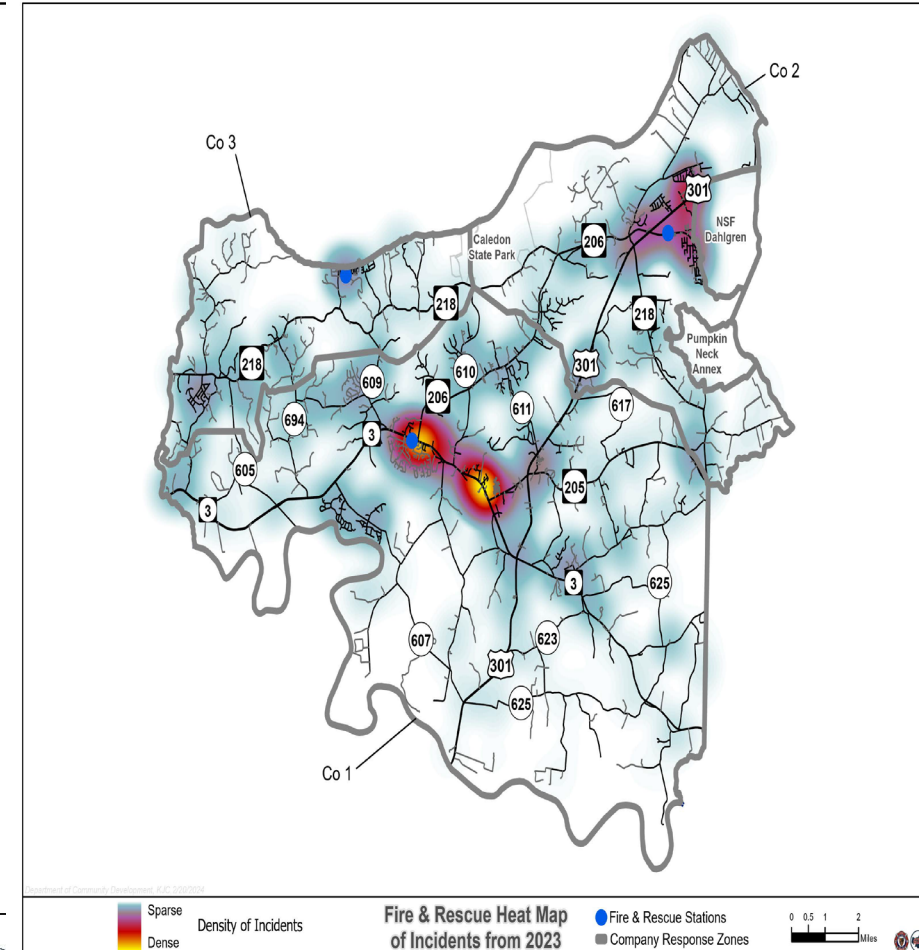
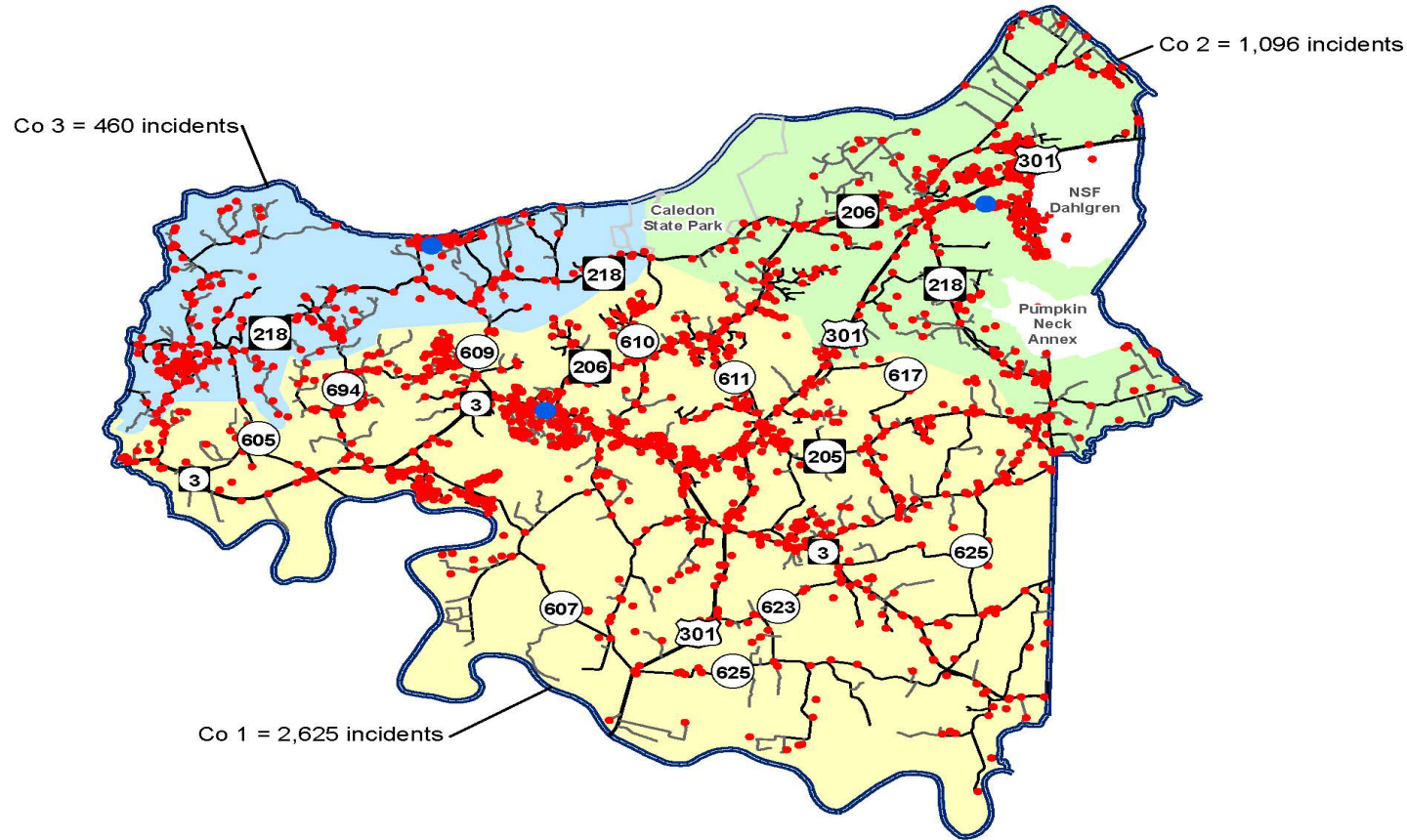


EMS Call Types 2023

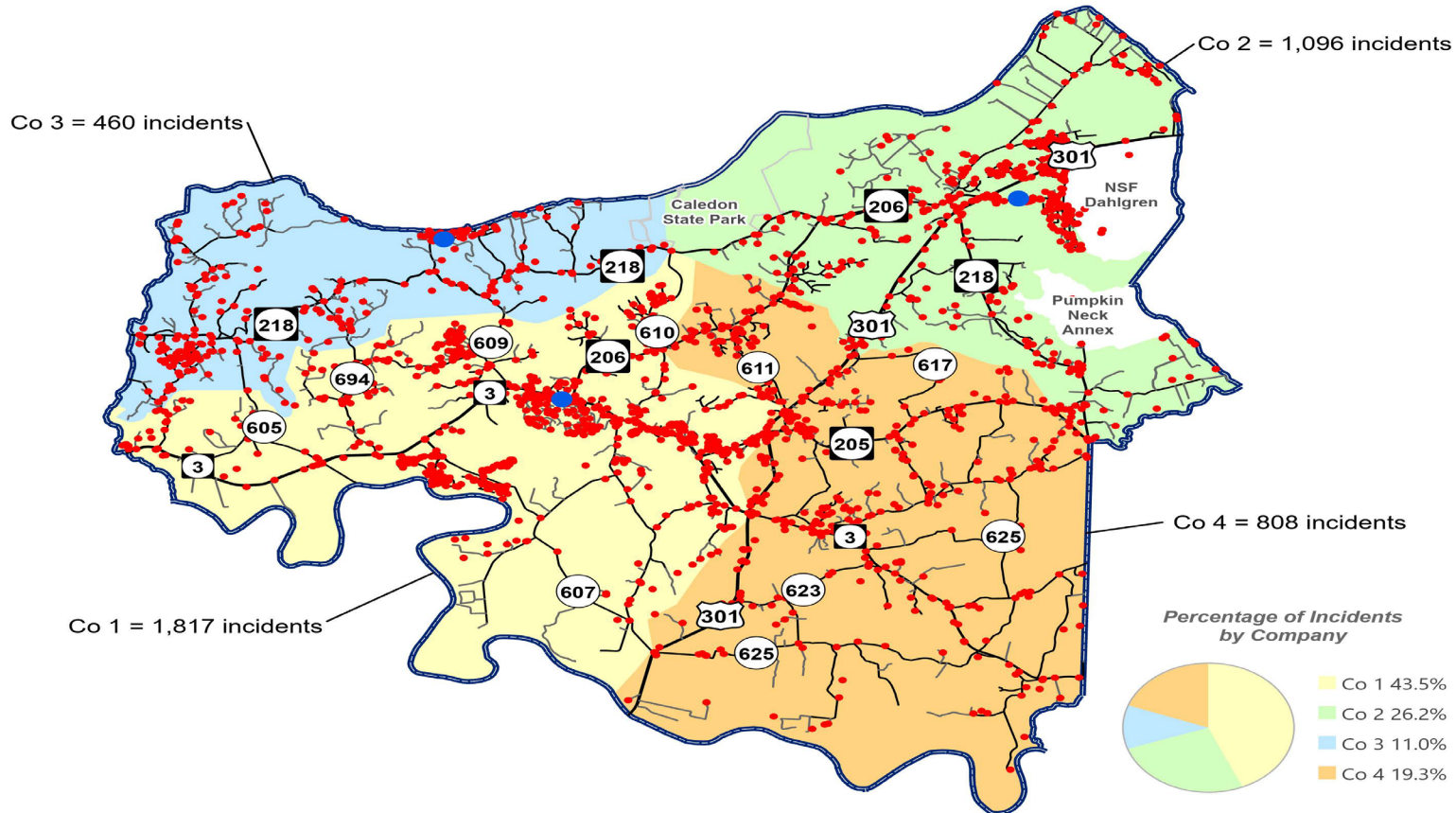
- EMS Calls: (Primary Call Type)
 - 354 Chest Pain
 - 379 Difficulty Breathing
 - 155 Abdominal Pain
 - 400 Illness
 - 611 Medical Emergency
 - 120 Unconscious Person
 - 24 CPR in Progress
 - 67 Diabetic Emergency



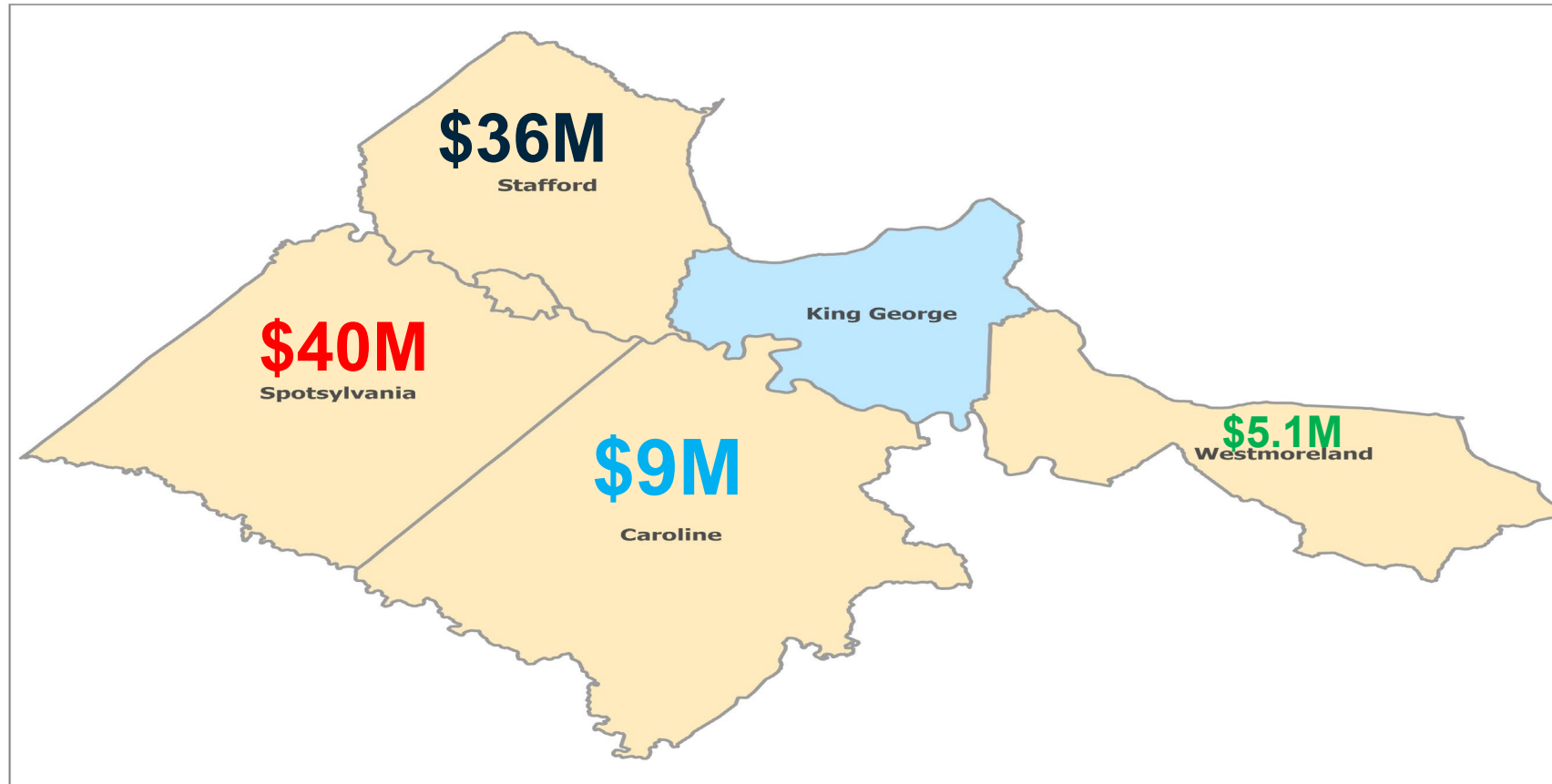
2023 Incident Locations



Proposed Shiloh District Fire Station

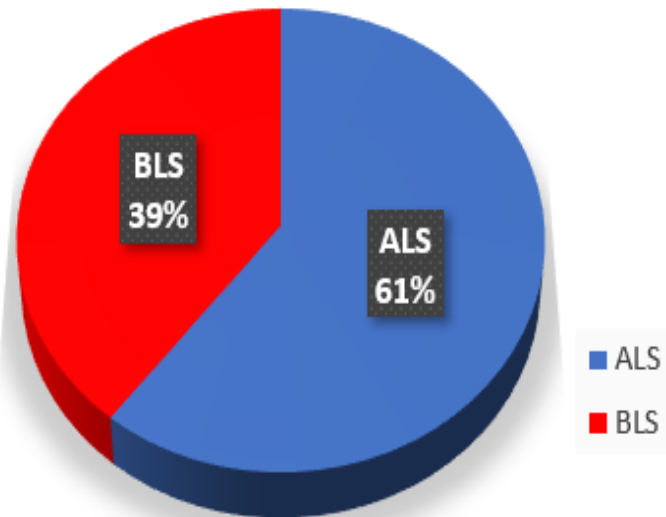


Neighboring Localities Fire/Rescue Budgets

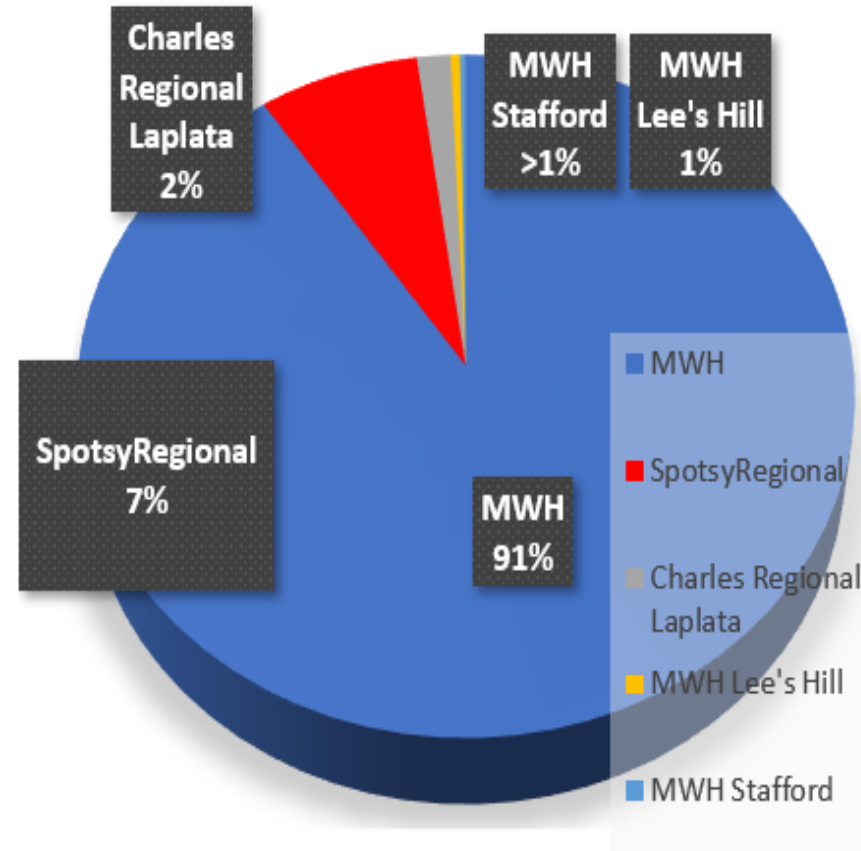


EMS Stats

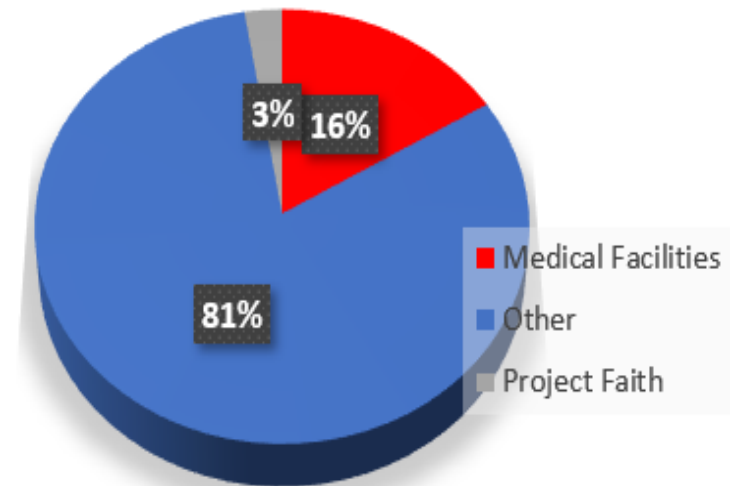
Transport Level of Care



Hospital Destination



EMS Call Location



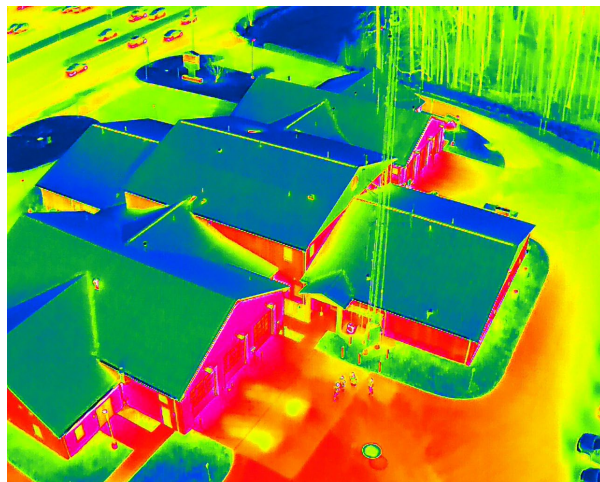
EMS Gear Costs



Fire Gear Costs



Specialized Teams



Child Safety Seat Installations

- Department has 4 (+1 KGSO) active **Child Passenger Safety Technicians**
- All three Fire Houses are listed check-sites
- In 2023 **21** Car Seat Installations were performed



Public Education



Emergency Management



- Oversees County Preparedness, Response, Recovery, and Mitigation from Disasters
- Maintains the Emergency Operations Center (EOC) and Emergency Operations Plan (EOP)
- Completed Fairview Beach Shoreline Stabilization Project \$2.3M- 95% Funding from FEMA & VDEM



2023 Accomplishments

- Took delivery on two replacement ambulances- placed order for third ambulance.
- **Took delivery on new EMS 1/EMS Supervisor Response Vehicle.**
- Continued the Pre-hospital Blood Transfusion program.
- **Entered into a mutual agreement with VDOT for the Opticom Traffic Signal Preemption System.**
- Completed a Joint Sheriff's Office, VA State Police, and Fire & Rescue – Active Shooter and Hostile Event Response (ASHER) Plan.
- **Entered into an operating agreement with Virginia Port Authority to strengthen water response capabilities.**
- Entered into Memorandum of Understanding with VDEM for Swiftwater rescue resources.



Challenges

- Maintaining adequate staffing levels with increase call volume
- Price Increases
- Less grant opportunities
- Competitive salary to keep experienced personnel
- Decreasing number of Volunteer members



Exciting Future

- New County Radio System Launch
- New Engine 1
- New Company 2
- New Knox Box System
- Recruit Class Graduation



Our Family Protecting Yours



An aerial night photograph of a fire station. The station is a large, single-story building with a dark roof and light-colored walls. Several fire trucks are parked in the bays and in a lot to the right. The scene is illuminated by streetlights and the station's own lights. Overlaid on the center of the image is the text "Any Questions?" in a large, bold, yellow font.

Any Questions?

Emergency 911
540.775.8900
8122 Kings Hwy King George, VA 22485
[Facebook.com/KingGeorgeFire](https://www.facebook.com/KingGeorgeFire)
WWW.KGFireRescue.Com

